

[www.knights.uk.com](http://www.knights.uk.com)

CARDIFF

VALE

CAERPHILLY

BRISTOL







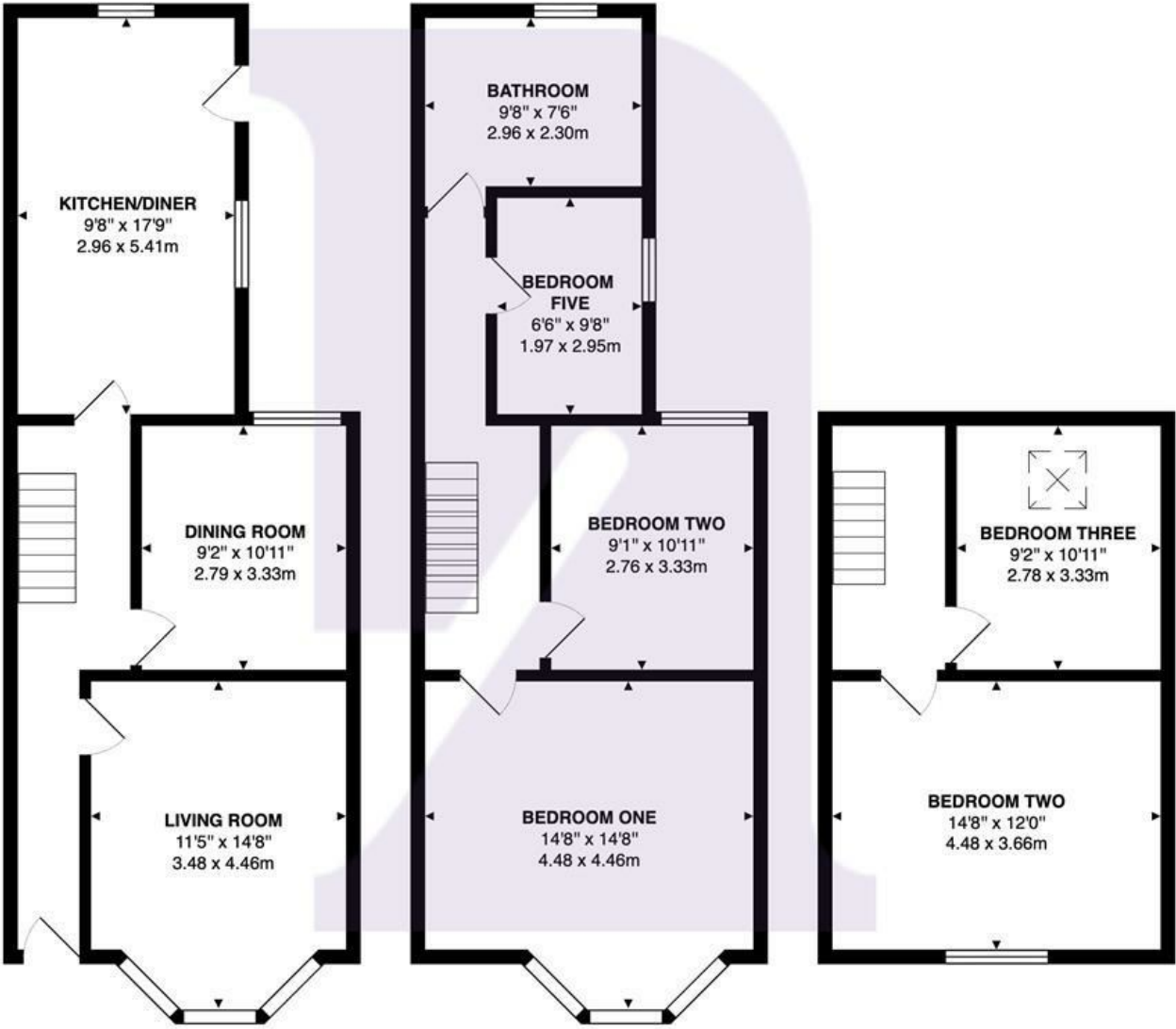
Comments by Mrs Samantha Draisey



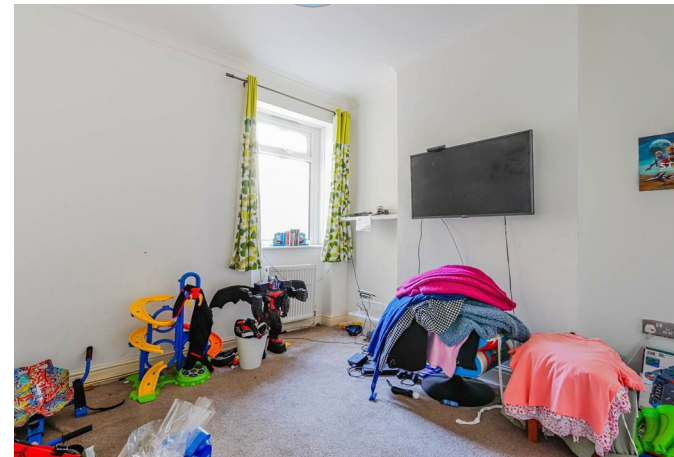
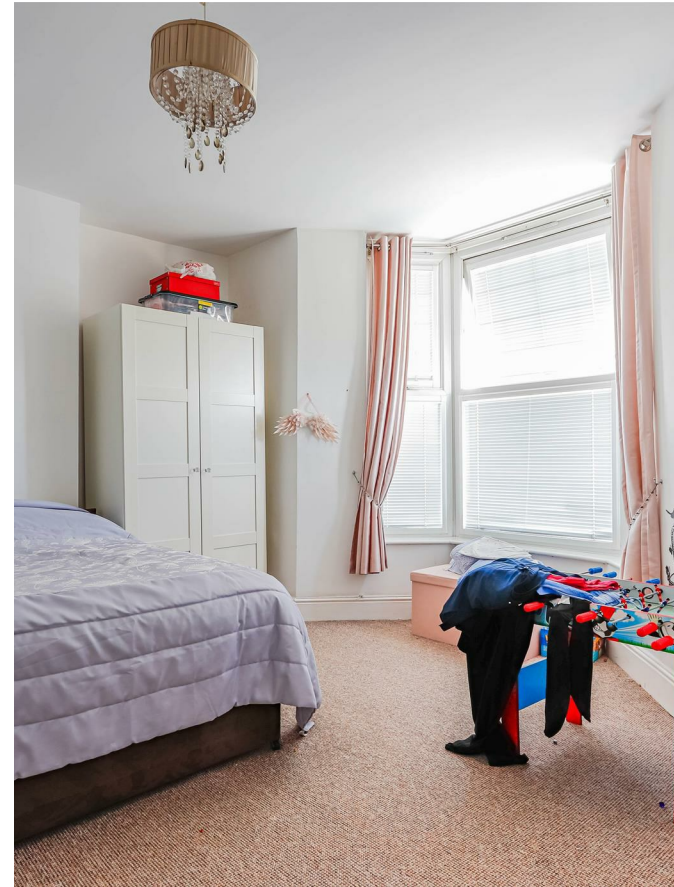
**Property Specialist**  
**Mrs Samantha Draisey**  
Branch manager

samantha@knights.uk.com

Courtenay Road, Barry, CF63 3QG



Total Area: 1420 ft² ... 132.0 m²  
All measurements are approximate and for display purposes only



# Courtenay Road

*East End, Barry, CF63 3QG*

Guide Price

**£250,000**



5 Bedroom(s)



1 Bathroom(s)



1571.53 sq ft



Contact our  
***Knights Barry Branch***

01446 700222

Located on the sought-after Courtenay Road, this generous five-bedroom terraced house offers 1,572 sq ft of versatile living space, ideal for families or those needing room to grow.

The property features two bright reception rooms, a well-proportioned bathroom, and five spacious bedrooms, perfect for family life, home working, or guest accommodation. While some modernisation is needed, the home presents an excellent opportunity to personalise and add value.

Situated close to local amenities, schools, and transport links, this home combines space, potential, and a desirable location. Early viewing is highly recommended.





RECEPTION ROOM ONE 14'8 x 11'5 (4.47m x 3.48m)

RECEPTION ROOM TWO 10'11 x 9'2 (3.33m x 2.79m)

KITCHEN/DINER 17'9 x 9'8 (5.41m x 2.95m)

BEDROOM ONE 14'10 x 14'7 (4.52m x 4.45m)

BEDROOM TWO 14'9 x 12'6 (4.50m x 3.81m)

BEDROOM THREE 10'7 x 10'1 (3.23m x 3.07m)

BEDROOM FOUR 11'0 x 9'1 (3.35m x 2.77m)

BEDROOM FIVE 9'7 x 6'9 (2.92m x 2.06m)

BATHROOM 9'8 x 8 (2.95m x 2.44m)

C A R D I F F

V A L E

C A E R P H I L L Y

B R I S T O L





